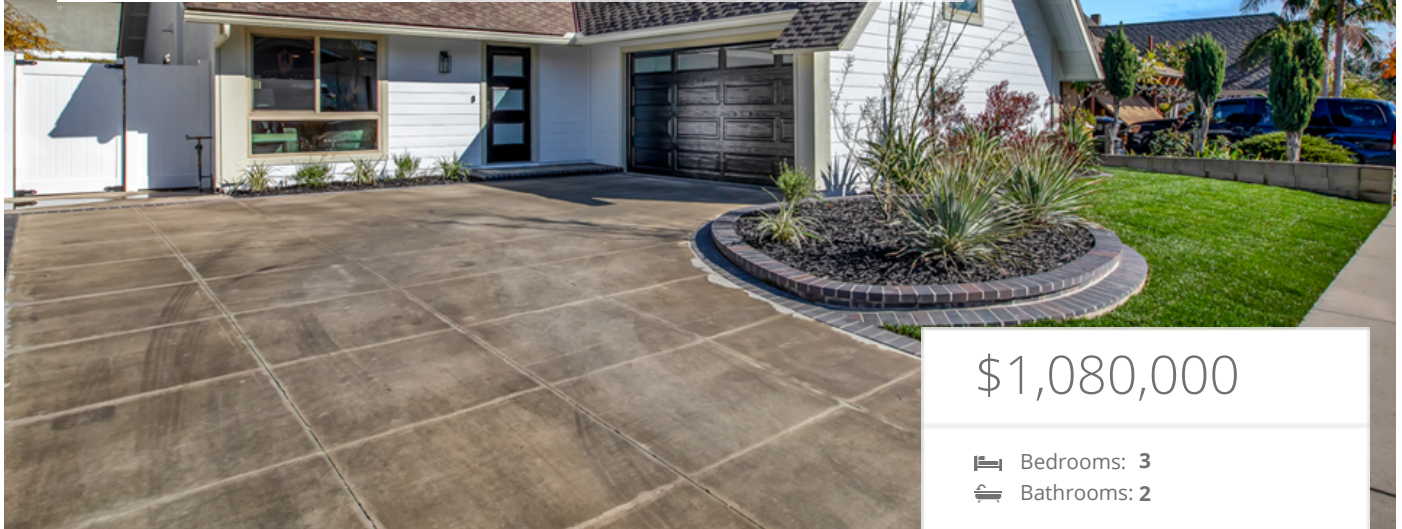




# Spectacular Remodel!

2231 Coco Palm Dr., Tustin, CA 92780



## \$1,080,000

- 🛏 Bedrooms: 3
- 🚿 Bathrooms: 2

### Property Description

METICULOUSLY REMODELED SINGLE STORY HOME. Interior location within the desirable & centrally located Peppertree community (NO HOA DUES OR MELLO ROOS). As you enter through the upgraded front door, you'll be impressed with the soaring ceilings, open layout & attention to detail. Luxurious finishes like ultra-smooth interior walls, newer shiplap siding on exterior, new 2-panel doors, upgraded baseboards & casing, modern plumbing & lighting fixtures & top-of-the-line luxury vinyl plank flooring throughout. The DREAM KITCHEN gleams with Calacatta Quartz countertops with waterfall finishes on both ends, full quartz backsplash, shaker cabinets (w/ lazy Susan, trash/recycle bins & spice rack) with additional cabinetry for storage at the breakfast bar (seating for 4+), custom-made floating shelves, stainless steel sink & high quality stainless steel appliances. The living room has soaring ceilings & an included never used 65" Samsung 4K LED TV. The dining area is roomy & is accented with a floor-to-ceiling fireplace with a custom solid wood stained mantle. The primary bedroom is spacious & has dual closets with two rows of shelves/poles. The primary bathroom gives off 5-star hotel vibes that features a spa-like, over-sized shower with DUAL rain & handheld shower heads, glowing shampoo box, back-lit anti-fog mirror, electronic bidet with remote, linen cabinets & a barn door to efficiently separate the sleeping area from the bathroom. The secondary bedrooms upgraded closet doors & ceiling fans with remotes. Energy efficient improvements like a 19.5 SEER A/C & Heating system with updated ducting (2022), water heater (2022), Nest thermostat (2022), LED lighting throughout (2022) & dual pane vinyl windows. House has been REPIPED with PEX piping in late 2022! Nest doorbell is also included. TERMITE CLEARANCE! The yards are beautifully landscaped & accented with LED spot lighting. The backyard is surrounded with block walls & features an easy-to-maintain alumawood patio cover, grassy area & a raised planter with fruit trees. Store your favorite toys in the oversized 2 car garage (may fit 3 vehicles) with a freshly poured concrete slab & outlet for possible electric car charging. Walk to nearby park & tennis courts. Easy access to 5, 55, 405 & 261 freeways. Tons of great shopping at the nearby Village at Tustin Legacy & The District. Come see this pride of workmanship, so you can have pride of ownership from day 1.

#### EXTRAS:

- Central Air
- Fireplace
- Open Floor Plan
- Living Space: 1,320 sq ft
- Lot Size: 5,445 sq ft



**John Babai**

DRE #01347118

📞 888-604-6637



**Bahia Babai**

DRE #01825479

📞 888-604-6637



MORE ON:

[www.2231CocoPalm.com](http://www.2231CocoPalm.com)