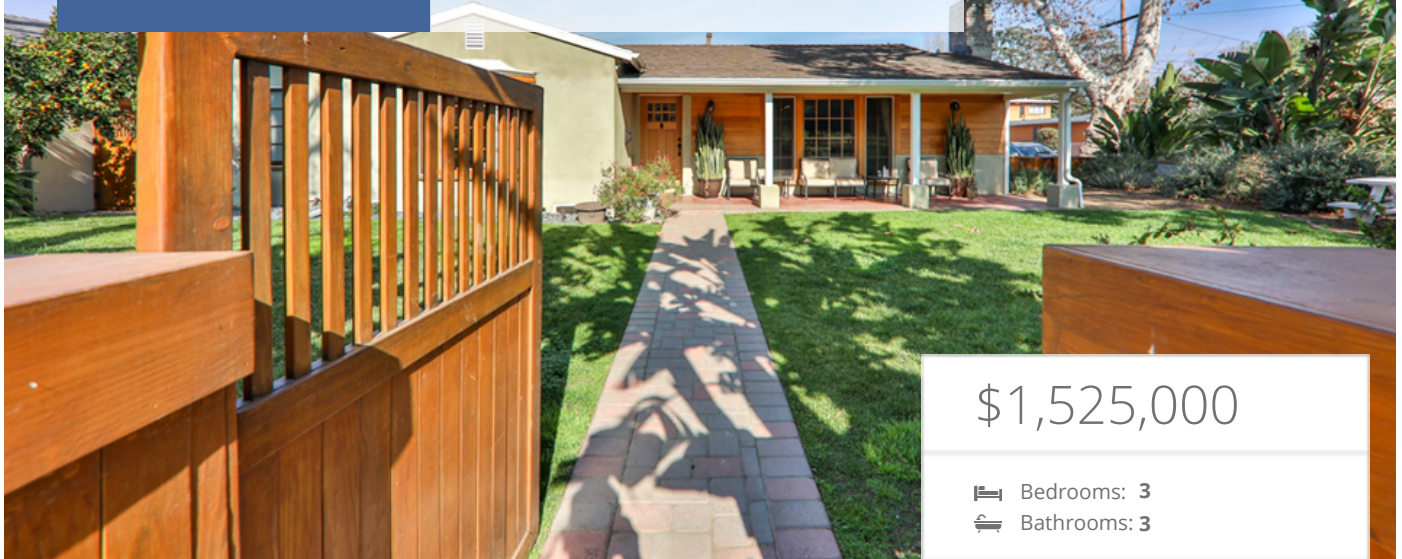




**RODEO REALTY**  
LOCAL EXPERTISE, GLOBAL PRESENCE

# Beautiful Home

1403 Garden Street, Glendale, CA 91201



\$1,525,000

- Bedrooms: 3
- Bathrooms: 3

**EXTRAS:**

- Living Space: 2,443 sq ft
- Lot Size: 7,900 sq ft

## Property Description

WOW! Gorgeous Rancho Home. This modern traditional 3 bedroom 3 bathroom home was remodeled and expanded in 2015. Additionally there are 2 home offices which bring the sq footage to 2440 (per Appraiser) and are perfect for todays working from home environment. Set back from the street with a private front yard an overlooking Bette Davis Park and the hills of Griffith Park, this is an idyllic spot. Watch the horses go by. The extra large Master Suite has a beautiful bathroom and fabulous closet in a zen like setting. All the rooms are oversized and spacious. The backyard has a beautiful pool immersed in landscape and privacy. You will be delighted with the open space and high end finishes. Some of the features are: modern alarm system and complete security camera system, renovated salt water pool with all new equipment and jacuzzi, All Viking Appliances, all new wiring, new HVAC system with 2 separate zones and so much more. Beloved and popular Franklyn Elementary School offering 4 languages serves the neighborhood. Close to shops, restaurants, Studios, the bike path, the Los Angeles Equestrian Center and the trails of Griffith Park. Come home to the Rancho!



Jay Geisenheimer  
CalBRE Lic.#01301526

📞 818-469-5473



MORE ON:  
[www.1403Garden.com](http://www.1403Garden.com)