

COMPASS

Harvard Regency Condo

1101 South Harvard Boulevard 301, Los Angeles, CA 90006

\$829,950

🛏 Bedrooms: 3
🚿 Bathrooms: 2

EXTRAS:

- Living Space: 1,388 sq ft
- Lot Size: 22,960 sq ft

Property Description

Welcome to The Harvard Regency! This 3 bed 2 bath modern contemporary home has an amazing open floor plan with hardwood floors throughout. Stainless steel Kitchen-Aid appliances. Moen Faucets. Quartz countertops. Two Large Patio/Balconies connecting to each room. The high ceilings with recessed lighting gives each room a bright spacious feel to it. State of the art Washer and Dryer in unit with ample amount of storage space. Building offers gym, recreation room, and bicycle storage. HOA covers water, trash, maintenance, general building insurance and guest parking. Convenient location near markets, restaurants, with a 93 walk score. Don't miss your chance to make Harvard Regency your new home!



Adam Kang

02149971

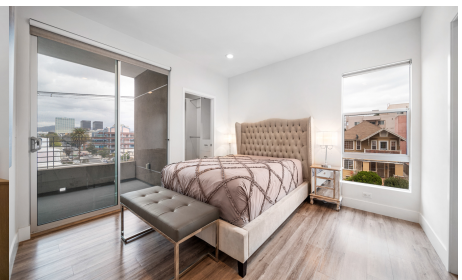
📞 310-614-1159



Blake Stargel

02033500

📞 213-330-6614



MORE ON:
www.1101SHarvardBlvd.com