

LOGO
GOES HERE

14230 Plumas Court, Fontana, CA 92336

\$684,900

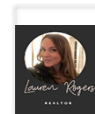
🛏 Bedrooms: 4
🚿 Bathrooms: 2.5

EXTRAS:

- Living Space: 2,089 sq ft
- Lot Size: 4,487 sq ft

Property Description

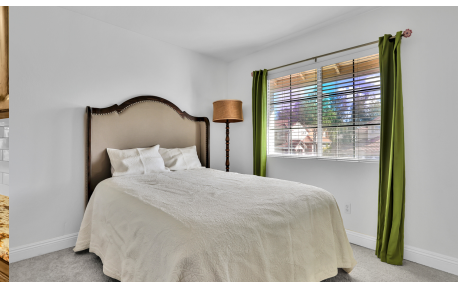
Welcome to your turnkey home in the highly desired Heritage Village community! The moment you arrive you will fall in love with all of the details this 4 bed 2.5 bath home has to offer including craftsman hand scraped Brazilian walnut custom flooring, spanish cotta terra cotta tile, + brand new carpet upstairs. The Chef inspired Old World Kitchen is beautiful with professional grade Thermadore appliances, Kitchenaid range hood, custom Andulasian cabinetry + a large stainless steel farmhouse sink. Relax on cozy nights by your custom tile fireplace. The house has a UV air filtration system to get rid of germs + water filtration system & instant boiling water-perfect for entertaining guests. Primary bathroom has just been remodeled! Enjoy your spacious backyard with mountain views! Amazing location zoned for the Highly sought after ETIWANDA school district & close to a gorgeous park + shopping & freeway access!



Lauren Rogers

02034021

📞 626-343-3979



MORE ON:
www.14230plumascourt.com