

COMPASS

Renovated Townhome

1870 Morningside Court, Azusa, CA 91702

\$599,000

🛏 Bedrooms: 3
🚿 Bathrooms: 2.5

EXTRAS:

- Living Space: 1,250 sq ft
- Lot Size: 1,749 sq ft



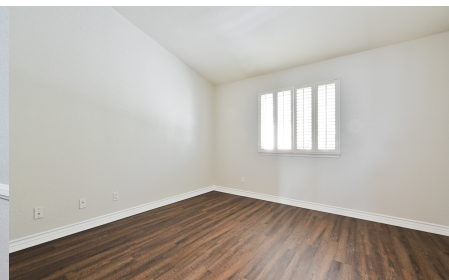
Kathy Gibson

DRE Lic. #01098626

📞 626-826-9003

Property Description

Nestled high in the hills of Azusa lies this well-maintained end-unit 3 bed 2.5 bath townhome in the desirable community of Canyon View. Freshly painted and with new laminate flooring installed, this home is move-in ready. The living room features a gas fireplace, vaulted ceilings and French doors opening to a spacious private patio. All appliances are included including black Frigidaire gas range and dishwasher, stainless steel Amana refrigerator and washer/dryer. There's a pool and two spas in the complex. Outdoor enthusiasts will appreciate the close proximity to the Azusa Greens Country Club, Northside Park, Pioneer Park and hiking trails, and the Azusa Downtown Gold Line Station is just 1.5 miles away!



MORE ON:
www.1870morningside.com